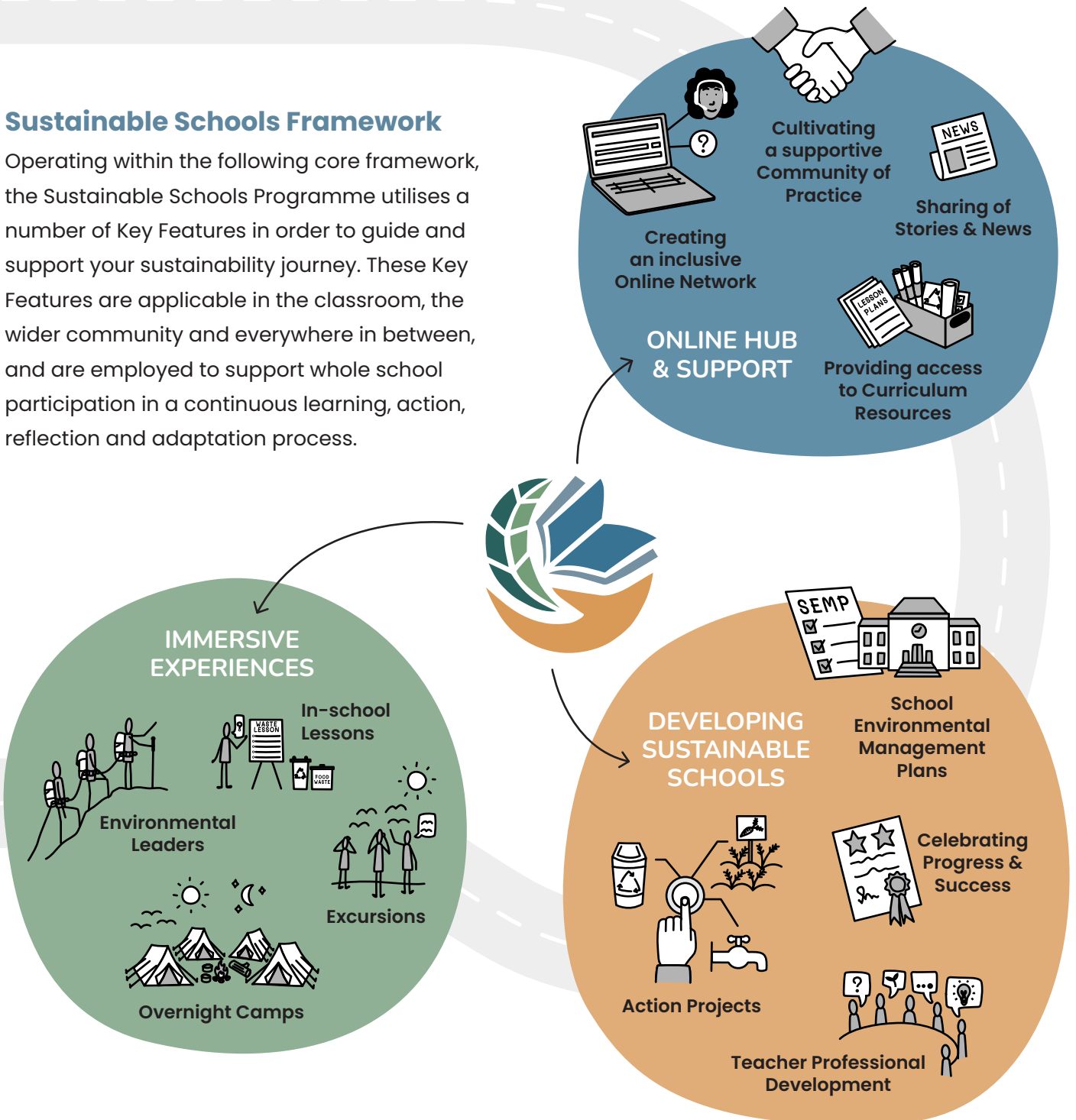


PROGRAMME KEY FEATURES

Sustainable Schools Framework

Operating within the following core framework, the Sustainable Schools Programme utilises a number of Key Features in order to guide and support your sustainability journey. These Key Features are applicable in the classroom, the wider community and everywhere in between, and are employed to support whole school participation in a continuous learning, action, reflection and adaptation process.



A Dynamic Online Hub



The Sustainable Schools Hub provides you with everything you need to implement the Programme effectively. Use this platform to engage with your support network, and find all the tools and resources designed to assist you along your sustainability journey. This is also where you showcase your work and projects, track your progress, measure your successes, and receive rewards for your achievements. The Online Hub provides a space to jointly learn how to turn intentional planning into meaningful action.

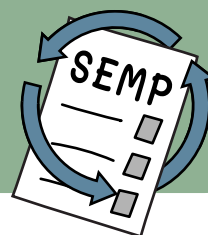


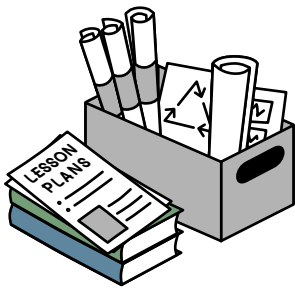
An Inclusive & Supportive Community

Made up of our Programme staff, as well as educators, learners, partners, funders, and many more participants and stakeholders, our Sustainable Schools Community consists of a group of likeminded people all working towards positive change in and for the environment. This is your support system, which offers a safe space for sharing knowledge, experiences and best practice – all within an informal, but professional setting.

School Environmental Management Plan (SEMP)

The SEMP is an invaluable tool which you use to plan, record, act, reflect and reconsider all your sustainability activities. By continuously measuring your efforts and results against your set goals, and adapting your work accordingly – this is where our collective learning takes place. The SEMP is your blueprint for past, present and future actions. It is also the SEMP which makes it possible for the Sustainable School's Community to bear witness to your efforts, and offer recognition and rewards for positive change.





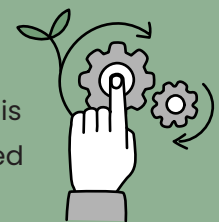
An Extensive Library of Resources

This is a collection of teaching and learning materials designed for the effective implementation of sustainability education in everyday classroom activities. These resources, available on the Online Hub, consist of:

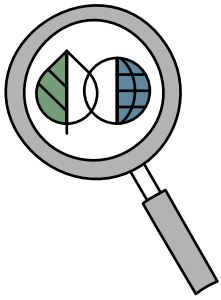
1. **Focus Area Guidebooks:** Eight Guides designed to facilitate the understanding of each Focus Area while providing practical ways to implement key topics and concepts with action project ideas, and links to relevant partner organisations and resources.
2. **Audits:** Tools to assist you in investigating, measuring, analysing and evaluating your school environment. Information from completed Audits will help establish a baseline of current sustainability practices in your school, assist you in selecting the most appropriate Focus Area(s) for your school, and provide the background knowledge to plan and implement impactful activities and projects.
3. **Lesson Plans and Activities:** Practical lessons and fun activities designed to assist you in incorporating Education for Sustainable Development topics into your current teaching practices. These are all aligned to the South-African curriculum (CAPS) and our Programme Focus Areas.
4. **Assessments:** A comprehensive set of South African curriculum (CAPS)-aligned assessments which slot seamlessly into your ongoing assessment processes, and support our collection of lesson plans. Use these assessments to measure your learner's understanding of important sustainability topics.

Action Taking

This is where a school curriculum becomes more than just book knowledge - this is where it becomes real. Each of our Programme Focus Areas offers an unlimited number of possible action projects - **to make things happen out there!**



Broaden your school's projects and activities: build an indigenous garden, create a recycling programme, monitor and save electricity, measure river water quality, grow vegetables for your schools/community, take part in a beach clean-upthe sky is the limit! And to help you with these exciting projects, connect with relevant, local partner organisations, who are there to support you every step of the way!



Focus on Connecting to Nature

Expanding on classroom and outdoor activities, experiences in a natural environment provide wonderful opportunities to connect with nature. With a better understanding of nature's inner workings, participants are able to interact with their surroundings more effectively, and with increasing confidence. Through these invaluable, and often life-changing events, participants are encouraged to develop a sense of responsibility and stewardship ... **And ultimately, a love for nature.**

Inspiration & Celebration

All programme participants are encouraged to share their experiences far and wide, and in doing so, motivate and inspire each other on their journey to sustainability. By communicating our own experiences with others, we also contribute to the collective learning within the Programme. We celebrate projects, schools and individuals who have made progress towards achieving their goals.



The Sustainable Schools Hub is the perfect place to showcase your stories of change!!



Monitoring and Evaluation (M&E)

To ensure a point of reference by which to measure the effectiveness of your Programme planning and implementation, the ongoing monitoring and evaluation of all our work is critical. Recording your steps taken, and their results, and contributing your insights to M&E questions and scenarios posed by the Sustainable School's team, are crucial. It is this which ensures a quality Programme, for all.